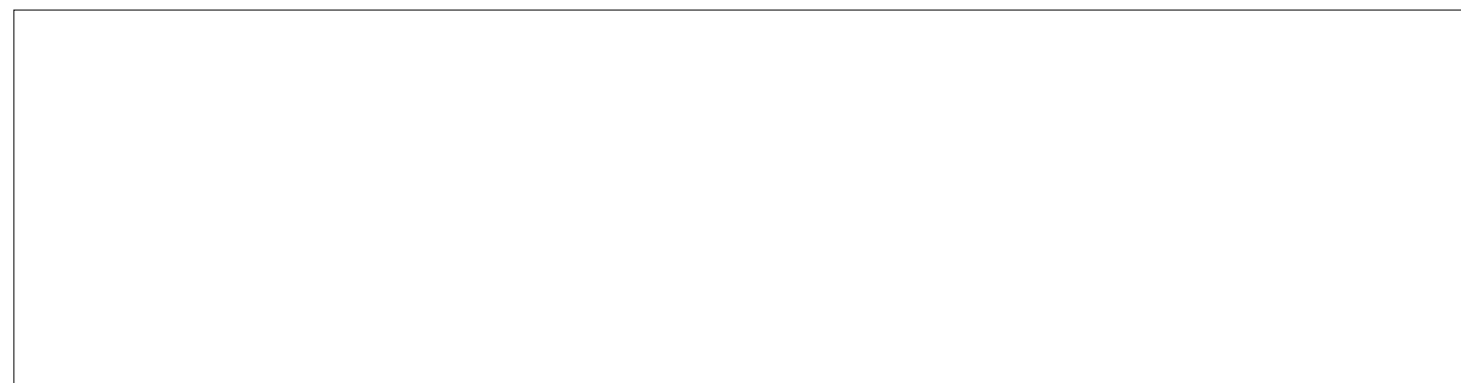
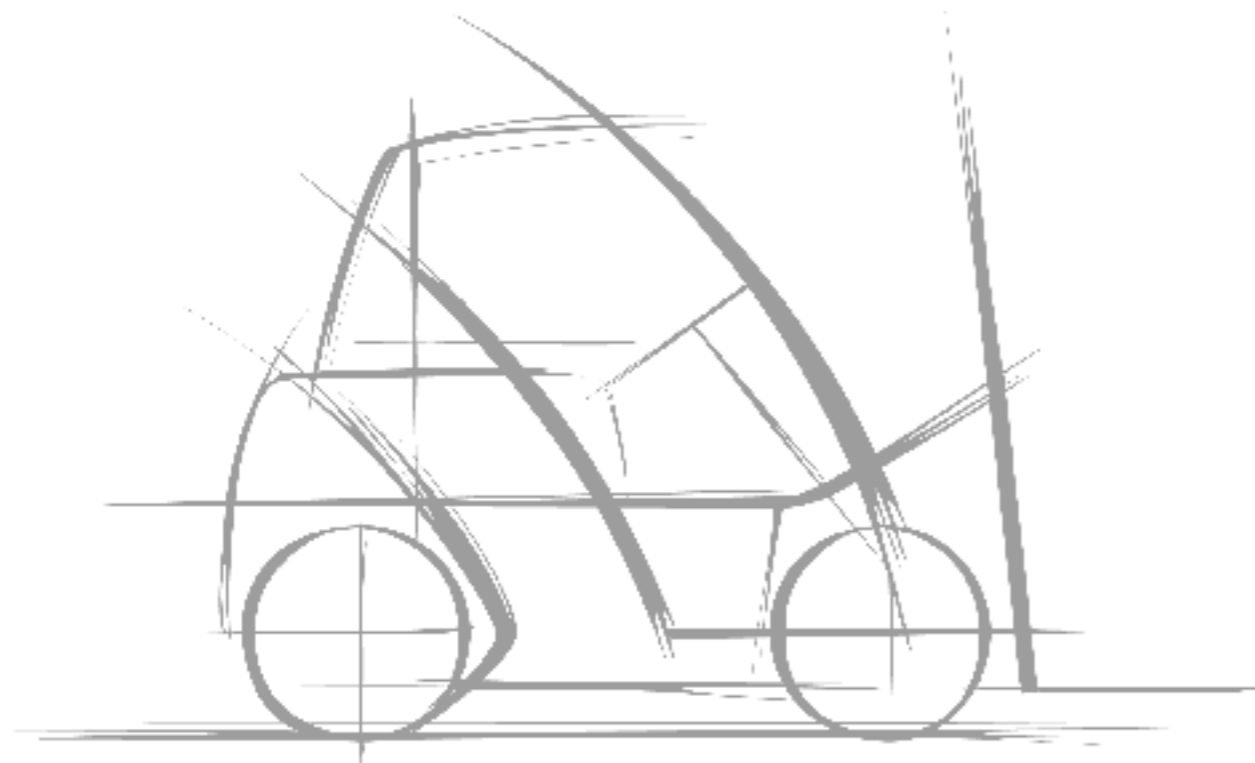


**NISSAN**  
**FORKLIFT**

# QX Series

2.0 - 2.5 - 3.0 Tonne



**NISSAN FORKLIFT EUROPE B.V.**

<http://www.nissan-nfe.com> SEN-QX-01.NFE/05-01-3250 Printed in the Netherlands

Nissan Motor Co., Ltd. reserves the right to make any changes without notice concerning colors, equipment or specifications detailed in this brochure, or to discontinue individual models. The colors of vehicles delivered may differ slightly from those in this brochure. The specifications vary for different countries depending on local market conditions. Please consult your local dealer to ensure that the vehicle delivered accords with your expectations. All values given may vary, due to motor and system tolerances and operational conditions. Some equipment shown on photos are optional.

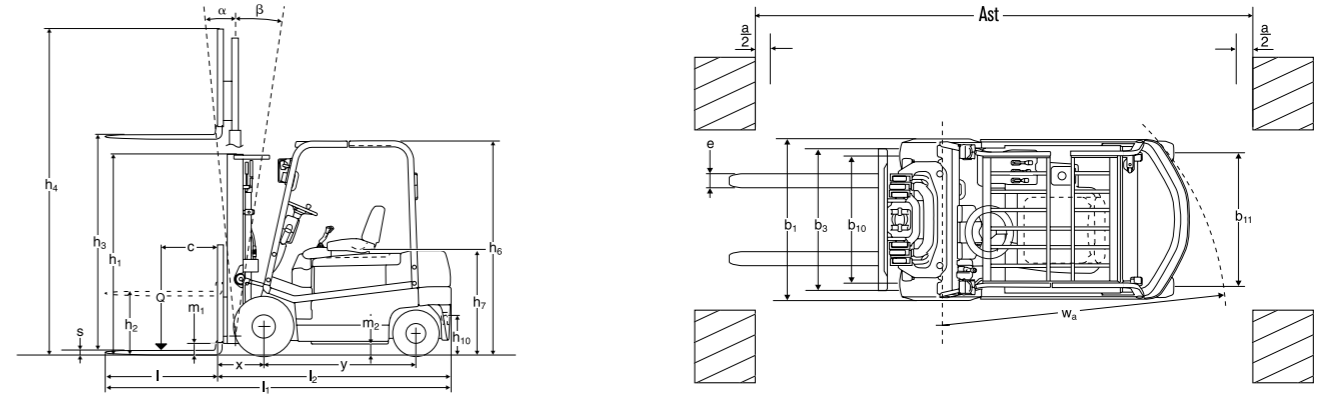
**NISSAN**  
**FORKLIFT**

**STANDARD SPECIFICATIONS**

		Counterbalance trucks Designation according VDI 3586	Data sheet for materials handling equipment				VDI 2198 Registration note
October 2005		Manufacturers Data and Design Characteristics					
CHARACTERISTICS	1.1	Manufacturer	Nissan	Nissan	Nissan	Nissan	
	1.2	Model name	QX-20	QX-25	QX-25	QX-30	
	1.3	Power unit	Battery	Battery	Battery	Battery	
	1.4	Operation	sit	sit	sit	sit	
	1.5	Load capacity	Q (t)	2.0	2.5	2.5	3.0
	1.6	Load centre	c (mm)	500	500	500	500
	1.8	Front overhang	x (mm)	465	465	465	475
	1.9	Wheel base	y (mm)	1515	1515	1660	1660
	WEIGHTS	2.1	Service weight (including battery, see 6.5)	kg	4265	4600	4605
2.2		Axle load with load, front/rear	kg	5540/725	6305/795	6385/720	7225/780
2.3		Axle load without load, front/rear	kg	2265/2000	2210/2390	2430/2175	2460/2545
WHEELS & TYRES	3.1	Tyres, front/rear (C=cushion,SE=superelastic,P=pneumatic)	SE(P)/SE(P)	SE(P)/SE(P)	SE(P)/SE(P)	SE/SE	
	3.2	Tyre size, front	23x9-10	23x9-10	23x9-10	23x10-12	
	3.3	Tyre size, rear	18x7-8	18x7-8	18x7-8	18x7-8	
	3.5	Wheels, number front/rear (x=driven)	2x/2	2x/2	2x/2	2x/2	
	3.6	Tread, front	b <sub>10</sub> (mm)	975	975	975	1015
	3.7	Tread, rear	b <sub>11</sub> (mm)	970	970	970	970
	DIMENSIONS	4.1	Mast tilt angle	α/β (°)	5/8	5/8	5/8
4.2		Standard mast height, fully lowered	h <sub>1</sub> (mm)	1995 <sup>1)</sup>	1995 <sup>1)</sup>	1995 <sup>1)</sup>	1995 <sup>1)</sup>
4.3		Standard mast free lift	h <sub>2</sub> (mm)	150 <sup>1)</sup>	150 <sup>1)</sup>	150 <sup>1)</sup>	155 <sup>1)</sup>
4.4		Standard mast lift height	h <sub>3</sub> (mm)	3000 <sup>1)</sup>	3000 <sup>1)</sup>	3000 <sup>1)</sup>	3000 <sup>1)</sup>
4.5		Standard mast height, fully extended	h <sub>4</sub> (mm)	4255	4255	4255	4255
4.7		Overhead guard height	h <sub>6</sub> (mm)	2120	2120	2120	2120
4.8		Height of seat/stand on platform	h <sub>7</sub> (mm)	1055	1055	1055	1055
4.12		Towing coupler height	h <sub>10</sub> (mm)	230	230	230	230
4.19		Overall length	l <sub>1</sub> (mm)	3430	3430	3575	3585
4.20		Length to fork face	l <sub>2</sub> (mm)	2330	2330	2475	2485
4.21		Overall width	b <sub>1</sub> (mm)	1180	1180	1180	1250
4.22		Fork dimensions	s,e,l (mm)	40x100x1100	40x100x1100	40x100x1100	45x100x1100
4.23		Fork carriage according to DIN 15173, class/form A,B		2A	2A	2A	3A
4.24		Carriage width	b <sub>2</sub> (mm)	1020	1020	1020	1020
4.31		Ground clearance, mast	m <sub>1</sub> (mm)	115	115	115	115
4.32		Ground clearance, centre of wheel base	m <sub>2</sub> (mm)	105	105	105	105
4.33		Right angle stacking aisle, pallet 1000x1200 across forks	Ast (mm)	3645	3645	3795	3805
4.34		Right angle stacking aisle, pallet 800x1200 across forks	Ast (mm)	3445	3445	3595	3605
4.35	Turning radius	Wa (mm)	1980	1980	2130	2130	
PERFORMANCE	5.1	Travel speed, with/without load	km/h	15/17.5	14.5/17.5	14.5/17.5	14/17
	5.2	Lifting speed, with/without load	mm / s	465/620	430/620	430/620	345/570
	5.3	Lowering speed, with/without load	mm / s	500/550	500/550	500/550	500/550
	5.6	Maximum drawbar pull, with/without load	kN	11.2/11.3	11.1/11.3	11.1/11.3	10.5/11.0
	5.8	Maximum gradeability, with/without load, 5 minute rating	%	18/26	16/24	16/24	13/22
	5.9	Acceleration time, with/without load (0-10 m)	s	4.7/4.6	5.0/4.8	5.0/4.8	5.3/5.0
5.10	Service brake		elec/hyd	elec/hyd	elec/hyd	elec/hyd	
DRIVE	6.1	Traction motor performance, 60 minute rating	kW	10.8/80V	10.8/80V	10.8/80V	10.8/80V
	6.2	Lift motor performance 20% rating	kW	17.1/80V <sup>2)</sup>	17.1/80V <sup>2)</sup>	17.1/80V <sup>2)</sup>	17.1/80V <sup>2)</sup>
	6.3	Battery according DIN 43531/35/36 A, B, C, no		DIN43535A	DIN43535A	DIN43535A	DIN43535A
	6.4	Battery voltage/rated capacity (5h)	V/Ah	80/480 <sup>3)</sup>	80/480 <sup>3)</sup>	80/600 <sup>3)</sup>	80/600 <sup>3)</sup>
	6.5	Battery weight (±5%)	kg	1470	1470	1770	1770
	6.6	Energy consumption in accordance with VDI-cycle	kWh/h	-	-	-	-
OTHERS	8.1	Type of drive motor control		Transistor chopper	Transistor chopper	Transistor chopper	Transistor chopper
	8.2	Working pressure for attachments	bar	127	127	127	127
	8.4	Noise level at operator's ear	dB(A)	-	-	-	-
	8.5	Towing coupler, design/type DIN, no		-	-	-	-

<sup>1)</sup> Other mast heights/free lift available as option <sup>2)</sup> Calculated at 5 min. rating <sup>3)</sup> Other battery capacities available as option

**DIMENSIONS**



**MAST SPECIFICATIONS & RATED CAPACITIES: 2.0, 2.5 TONNE**

Mast type	Mast name	Maximum fork height (mm) <sup>1)</sup>	Overall Height		Free Lift		Tilt angle Forward/backward degrees	Load capacity <sup>3)</sup>		
			Fully lowered (mm) <sup>1)</sup>	Fully extended		Without backrest (mm) <sup>1)</sup>		With STD backrest (mm) <sup>1)</sup>	Load centre 500 mm	
				Without backrest (mm) <sup>1)</sup>	With STD backrest (mm) <sup>1)</sup>				2.0 tonne kg <sup>1)</sup>	2.5 tonne kg <sup>1)</sup>
TWO STAGE WIDE VIEW	2W300	3000	1995	3645	4045	150	150	5/8	2000	2500
	2W330	3300	2145	3945	4345	150	150	5/8	2000	2500
	2W350	3500	2280	4145	4545	150	150	5/8	2000	2500
	2W370	3700	2405	4345	4745	150	150	5/8	2000	2500
	2W400	4000	2595	4645	5045	150	150	5/8	2000	2500
	2W450	4500	2845	5145	5545	150	150	5/8	2000	2500
TWO STAGE FULL FREE	2F300	3000	1995	3680	4045	1355	990	5/8	2000	2500
	2F330	3300	2145	3980	4345	1505	1140	5/8	2000	2500
	2F350	3500	2280	4180	4545	1640	1275	5/8	2000	2500
	2F370	3700	2405	4380	4745	1765	1400	5/8	2000	2500
	2F400	4000	2595	4680	5045	1955	1590	5/8	2000	2500
	THREE STAGE FULL FREE	3F385	3850	1845	4530	4895	1210	840	5/5	2000
3F430		4300	1995	4980	5345	1360	990	5/5	2000	2500
3F475		4750	2145	5430	5795	1510	1140	5/5	2000	2500
3F515		5150	2280	5830	6195	1645	1275	5/5	1900	2300
3F550		5500	2405	6180	6545	1770	1400	5/5	1800	2100
3F600		6000	2595	6680	7045	1960	1590	5/5	1650 <sup>3)</sup>	1850 <sup>3)</sup>
3F650		6500	2845	7180	7545	2210	1840	5/5	1400 <sup>3)</sup>	1550 <sup>3)</sup>
3F700		7000	3095	7680	8045	2460	2090	5/5	1150 <sup>3)</sup>	1300 <sup>3)</sup>

<sup>1)</sup> 1 inch = 25.4 mm 1 kg = 0.45359 lb <sup>2)</sup> With Super Elastic tyres, std. battery and tilt angles Other masts and (higher) load capacities with different tilt angles, tyres/batteries on request <sup>3)</sup> With optional wide Super Elastic tyres, overall truck width 1250 mm

**MAST SPECIFICATIONS & RATED CAPACITIES: 3.0 TONNE**

Mast type	Mast name	Maximum fork height (mm) <sup>1)</sup>	Overall Height		Free Lift		Tilt angle Forward/backward degrees	Load capacity	
			Fully lowered (mm) <sup>1)</sup>	Fully extended		Without backrest (mm) <sup>1)</sup>		With STD backrest (mm) <sup>1)</sup>	Load centre 500 mm
				Without backrest (mm) <sup>1)</sup>	With STD backrest (mm) <sup>1)</sup>				3.0 tonne kg <sup>1)</sup>
TWO STAGE WIDE VIEW	2W300	3000	1995	3645	4140	155	155	5/8	3000
	2W330	3300	2145	3945	4440	155	155	5/8	3000
	2W350	3500	2280	4145	4640	155	155	5/8	3000
	2W370	3700	2405	4345	4840	155	155	5/8	3000
	2W400	4000	2595	4645	5140	155	155	5/8	3000
	2W450	4500	2845	5145	5640	155	155	5/8	2950
TWO STAGE FULL FREE	2F300	3000	1995	3680	4140	1365	900	5/8	3000
	2F330	3300	2145	3980	4440	1515	1050	5/8	3000
	2F350	3500	2280	4180	4640	1650	1185	5/8	3000
	2F370	3700	2405	4380	4840	1775	1310	5/8	3000
	2F400	4000	2595	4680	5140	1965	1500	5/8	3000
	THREE STAGE FULL FREE	3F385	3850	1995	4495	4990	1395	900	5/5
3F430		4300	2145	4945	5440	1545	1050	5/5	3000
3F475		4750	2280*	5395	5890	1680	1185	5/5	2850
3F515		5150	2405	5795	6290	1805	1310	5/5	2750
3F550		5500	2595	6145	6640	1995	1500	5/5	2400
3F600		6000	2845	6645	7140	2245	1750	5/5	2050
3F650		6500	3095	7145	7640	2495	2000	5/5	1750
3F700		7000	3345	7645	8140	2745	2250	5/5	1400

<sup>1)</sup> 1 inch = 25.4 mm 1 kg = 0.45359 lb <sup>2)</sup> With Super Elastic tyres, std. battery and tilt angles Other masts and (higher) load capacities with different tilt angles, batteries on request \* special container mast available: 2145 mm