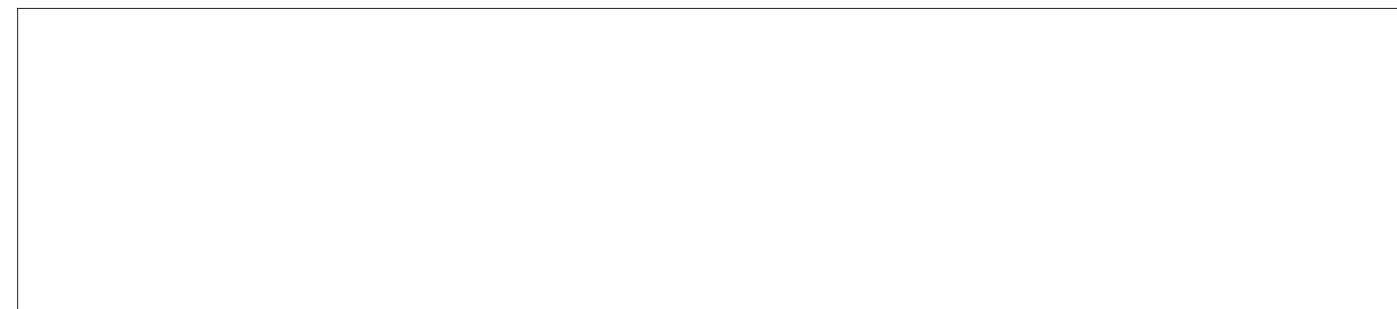
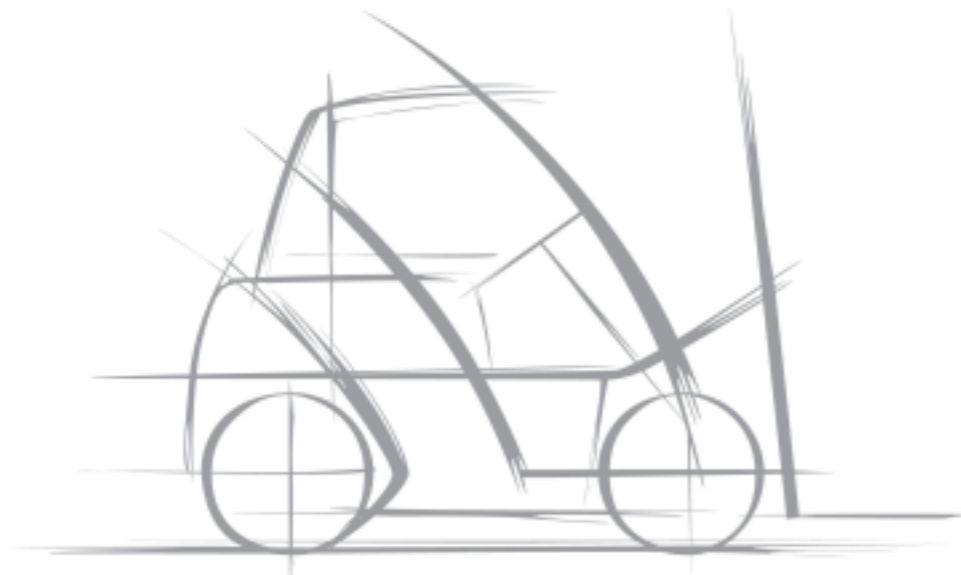


**MAIN SPECIFICATIONS**

Model		QX-20	QX-25	Q25	QX-30
Load capacity	kg	2,000	2,500	2,500	3,000
Load centre	mm	500	500	500	500
Overall width	mm	1,180	1,180	1,180	1,250
Turning radius	mm	1,980	1,980	2,130	2,130
Overhead guard height	mm	2,120	2,120	2,120	2,120
Length to fork face	mm	2,330	2,330	2,475	2,485

Model		QX-20	QX-25	QX-25	QX-30	
Battery capacity *	standard	V/Ah	80/480	80/480	80/600	80/600
	high	V/Ah	80/600	80/600	80/750	80/750
Electric motor	drive	kW	10.8	10.8	10.8	10.8
Electric motor	load handling	kW	17.1	17.1	17.1	17.1

\* Larger battery capacities on request



**NISSAN FORKLIFT EUROPE B.V.**

<http://www.nissan-nfe.com> CEN-QX-01.NFE/05-06-5000 Printed in the Netherlands

Nissan Motor Co., Ltd. reserves the right to make any changes without notice concerning colors, equipment or specifications detailed in this brochure, or to discontinue individual models. The colors of vehicles delivered may differ slightly from those in this brochure. The specifications vary for different countries depending on local market conditions. Please consult your local dealer to ensure that the vehicle delivered accords with your expectations. All values given may vary, due to motor and system tolerances and operational conditions. Some equipment shown on photos are optional.



# QX Series

2.0 - 2.5 - 3.0 Tonne





# The proven leader

With its latest QX Series, Nissan once again enhances its reputation for manufacturing forklift trucks designed both for ease of operation and efficiency. Versatile all-rounders, with their excellent performance and great stability, the Nissan QX forklift trucks can be used anywhere, at any time. Created with the operator in mind, the contemporary design offers an ideal working environment where the operator can work in comfort. And thanks to the incorporation of numerous advanced technological features a QX Series forklift truck is sure to increase your productivity and efficiency.



**Lift speed**  
loaded/unloaded  
430/620 mm/sec.

### Lifting speed

Depending on user requirements, the maximum lifting speed can also be set individually between 500 and 620 mm/sec, making the QX Series suitable for moving goods of every type.



**Travel speed**  
loaded/unloaded  
14,5/17,5 km/h.

### Travelling speed

Supported by the Fuzzy Logic Acceleration Control system, the 10.8 kW motor quickly brings the QX forklift truck to its maximum travelling speed of 17.5 km/h (no load) when required. The maximum travelling speed can be set at between 5 and 17.5 km/h to suit specific circumstances, e.g. for handling delicate loads, increased safety or reduced energy consumption.



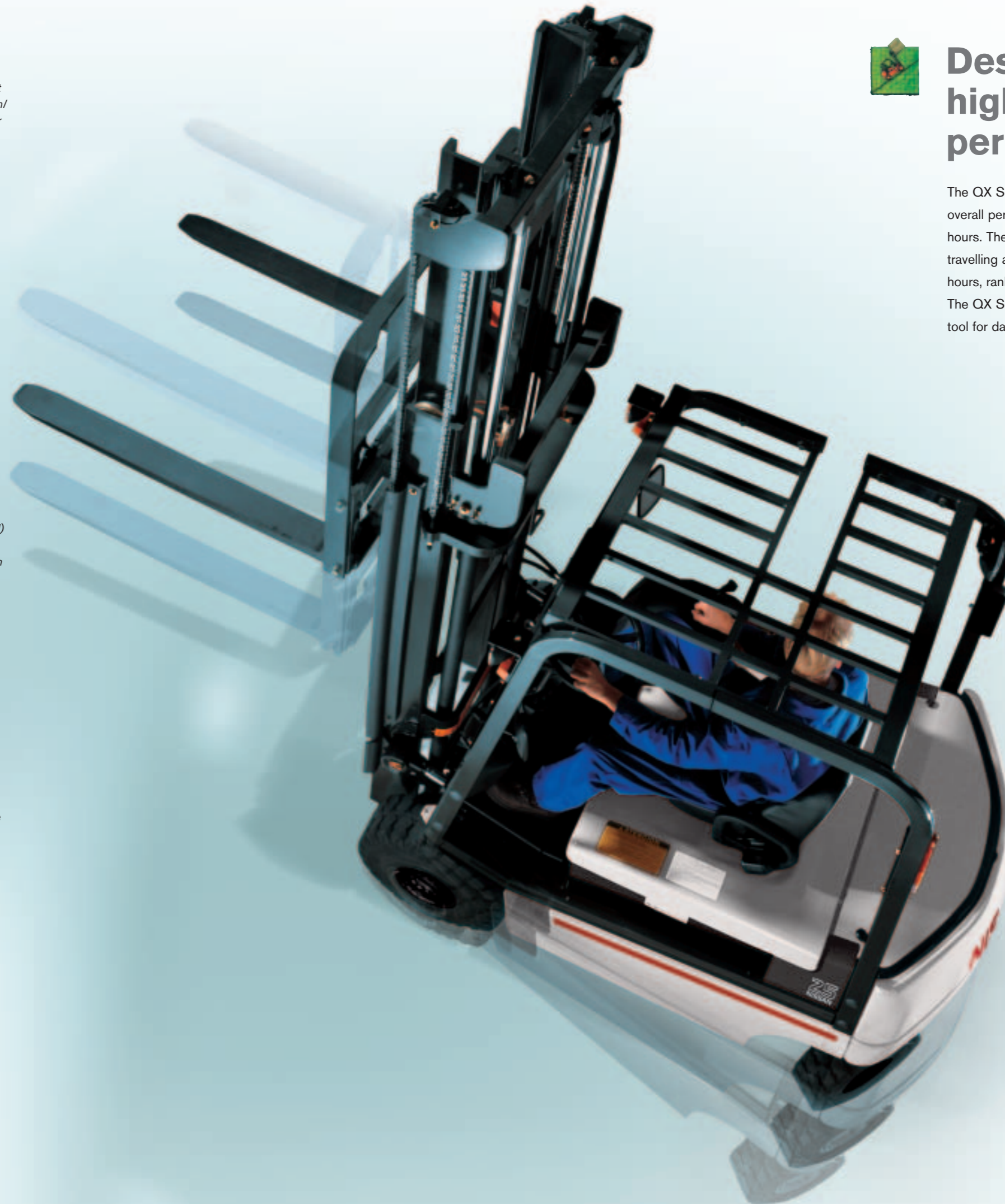
### Optimal stability

For the QX Series Nissan has redesigned the battery compartment. The new model combines a large battery compartment with a low centre of gravity, giving the truck excellent stability during both lifting and driving. Stability that enhances both working speed and safety. For even greater stability in demanding applications, a wide tread version is available for both the 2.0 and 2.5 tonne models.



## Designed for high levels of performance

The QX Series has been designed for high overall performance during extended working hours. The key performance characteristics, travelling and lifting speed and operating hours, rank among the best in the industry. The QX Series forklift truck is the ultimate tool for day-in, day-out operation.





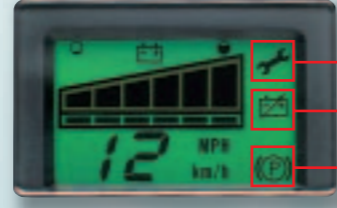
Battery capacity meter



Regenerative system



Travelling speed



Spanner symbol

Battery recharge indicator

Parking brake warning light



Pilot lamp

Function keys

Lighting switch



# The unique controller does precisely what you want

The QX Series' unique multi-functional microprocessor controller puts the operator in complete command of the forklift truck. With the instrument panel the operator is not only able to monitor the forklift's status and functions, but can also set the traction and lifting acceleration.

### Instrument panel

The four function keys are used to adjust settings and select modes. The left-hand LCD display operates automatically when the forklift truck is switched on and displays data on normal operation, malfunction and adjustments in settings. The easy-to-read LCD display on the right-hand side of the instrument panel keeps the operator constantly in touch with the status of the forklift truck. The features include such as a battery capacity meter, a speedometer and a parking brake warning light. The regenerative indicator indicates the level of energy being fed back to the battery

during braking and plugging. When the battery capacity is inadequate, the LCD display shows a battery warning symbol; it is followed by an acoustic alarm. A spanner symbol will appear on this display in the event of a malfunction in the motors or controller. At the same time, a message showing the nature of the malfunction will appear on the left-hand LCD display.

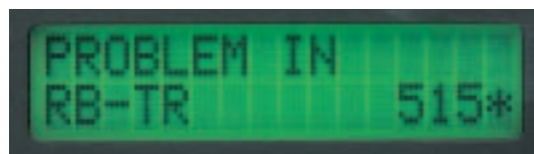
### On-board service diagnostic systems

The QX Series is fitted with two on-board service diagnostic systems to assist in troubleshooting and reduce downtime. A self-diagnosis system automatically checks a number of electrical components when it is activated. The results of the diagnosis are displayed on the left-hand LCD display. For problems which cannot be identified by the controller, there is also a dialogue-type diagnosis system, which the service engineer can use to test individual components.

### Truck performance setting

The forklift truck can be programmed to operate according to the specific requirements of the operator. For instance, the operator can reset the traction and lifting acceleration. However, for fully customised performance, the Nissan service engineer can adjust many other functions.

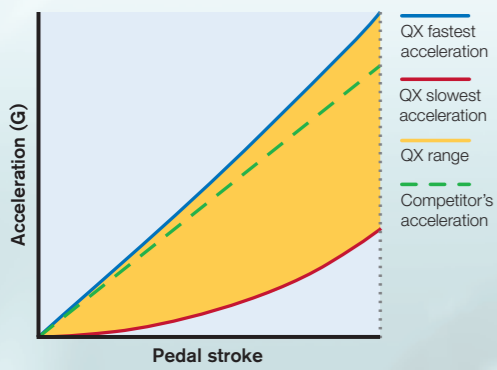
### Diagnosis system



### Performance setting



### Fuzzy logic acceleration curves



A curve is selected according to the speed with which the pedal is depressed



Multi-adjustable operator position



Control lever lay-out



# Ergonomic design for operator comfort and efficiency

The QX Series is designed for more comfort and easy operation. Conceived with the requirements of the operator in mind, the open operator workplace and ideally positioned dashboard form a comfortable working environment, leaving the operator free to concentrate on the task at hand.

The result is greater efficiency and higher productivity. Other features contributing to the comfort and ease of operation are the car-type pedal lay-out, the spacious legroom, the low step, the grab handle and the comfortable seat. But there is far more.

### Fuzzy Logic Control

A standard feature of the QX Series is Fuzzy Logic Acceleration Control. This unique feature enables the operator to control the forklift truck movement very accurately.

Depending on the speed of depressing the accelerator pedal, the acceleration of the forklift truck elapses following a specific curve. The sensitivity can even be pre-set within certain ranges. When the operator presses the pedal fast the Fuzzy

Logic Acceleration Control responds with an acceleration along a different curve than when the pedal is depressed slowly. This gives fast acceleration when needed, such as starting for driving long stretches, and slow acceleration for tight manoeuvring and final approach to a lorry or storage racking.

### Tilting steering column with memory

The QX forklift truck has a tilting steering column with two adjustment functions. With the first, the operator can set the steering wheel to the ideal position when driving. The second adjustment function is helpful when changing the battery. The steering column can be adjusted to a more upright position without affecting the operator's original setting. Once the battery has been replaced, the steering column can be returned to the prior driving position.

### Control levers

The control levers are conveniently located next to the operator's seat.

### Seat

The fore-and-aft seat adjustment and the adjustable back rest provide the best driving position, regardless of the operator's size. The weight-adjustable suspension seat is designed to absorb travelling shock and vibration and to eliminate operator discomfort throughout the long working day.



## Safety features built into design

Ever conscious of the hazards of forklift operation, Nissan incorporates safety from the very outset of the design process. The truck's low centre of gravity provides maximum stability, while the sturdy overhead guard offers optimal protection for the operator. With the large number of optional performance settings, the truck's performance can be adjusted to every application without compromising safety.

### Excellent visibility

The mast and overhead guard are designed to provide excellent visibility, while large rear-view mirrors encourage safe operating practices.

### Super-elastic tyres

Super-elastic tyres are a standard feature of the QX Series.

### Cabin

The QX Series can also be equipped with a factory installed full cabin (even with heater). This ensures an optimal working environment for the operator in less favourable climate conditions. The large window surfaces ensure excellent and undisturbed, all-round visibility. The doors can fully swing open to facilitate an easy and swift exchange of the battery.

### Grab handle

The grab handle facilitates mounting and dismounting. The operator no longer needs to cling to the lights or mirrors when getting on or off the vehicle.

### Brakes

The QX Series is equipped with three independently controlled braking systems. A regenerative braking system is automatically activated when the brake pedal is depressed. In addition, the forklift truck has a drum braking system. This guarantees adequate braking performance under all circumstances. The toggle-type parking brake is designed to ensure positive application and safer operation.



## Efficiency

True to Nissan's traditions, the QX Series has been designed to provide maximum performance and reliability. Nissan's reputation for quality and easy serviceability, resulting in low maintenance costs, is highly regarded throughout the industry.

### Quality

The QX Series forklift trucks are manufactured under ISO-9002 and ISO-14001 certification. The in-built quality is further enhanced by a well-trained, worldwide service organisation providing first-class support.

### Long working hours

The battery case has been enlarged to carry more energy. Furthermore, it is designed in such a way that it matches the dimensions of most of the competitors in this segment. Swapping batteries between forklift trucks of different brands helps you to economize on the number of spare batteries you need for multiple shift operations.

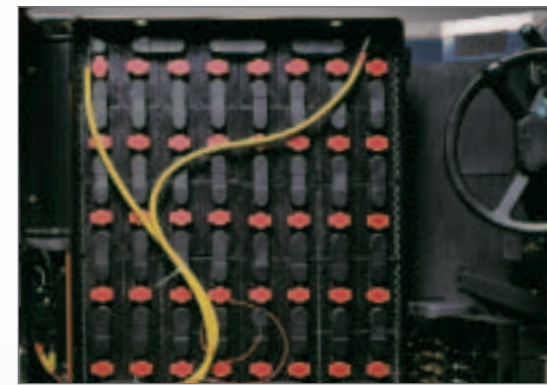
The advanced controller with its built-in function of controlling all electric motors results in optimal energy consumption and consequently in long operating hours per battery charge. The regenerative braking system, together with regeneration during plugging, extends the available operating hours even further.

### Serviceability

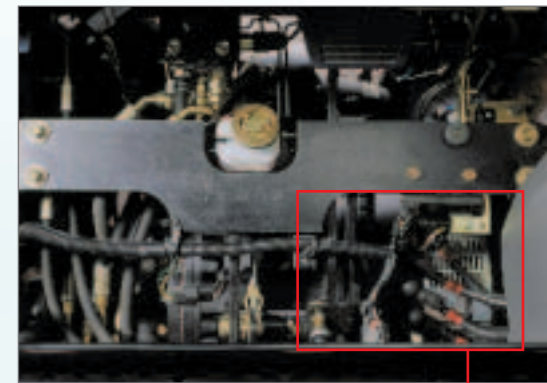
The controller is equipped with a system which warns the operator in the event of a malfunction. A spanner symbol will appear on the right-hand LCD display whenever one of the problems listed below occurs. At the same time, the left-hand LCD display will present an explanation of the problem.

- traction, hydraulic or power steering malfunction
- overheating of controller
- low brake fluid level

In addition, the two on-board service diagnosis systems will assist the service engineer to quickly trace the source of the problem. This, together with the easy accessibility of the components, will minimise downtime, resulting in higher productivity.



Battery lay-out (DIN 43536A)



Floorboard can be easily removed for easy access to traction motor



Traction motor



Easy access to hydraulic motor



The 2-stage wide view mast with the lift chains mounted on the outside offers superior visibility



Super-elastic solid tyres (3.0 tonne model shown)



Grab handle



Toggle-type parking brake

