

CROWN

WE 2300

Series



WE 2300 Series...

The Challenge. Stackers are used in the widest range of applications imaginable.

What these applications have in common is the need for a stacker that combines ease of operation with stability and durability. The WE 2300 Series incorporates an exceptional foundation for stability when placing loads at height, thereby raising operator confidence and increasing safety. In addition, Crown's proven sturdy construction provides durability for excellent performance in years to come. The Crown solution also provides precise manoeuvrability via its compact and contoured design. Operators further benefit from the unique X10® handle, with innovative ergonomic features that simplify handling and control. A variety of pedestrian and rider configurations are available to tailor each truck to match the application. Whether you are a small retailer with basic needs or a manufacturer with heavy throughput requirements, the Crown WE 2300 Series meets the challenge with a superior stacker solution.

WE 2300

Designed for use with Euro pallets and powered by a 24-volt electrical system, Crown fork-over pedestrian stackers feature load capacities of 1250kg and 1600kg. Both versions are available with a TL limited free lift mast (shown) or a TF two-stage mast with full free lift. The 1600kg version also accommodates a TT three-stage mast with full free lift and lower collapsed height ideal for navigating through doorways or under overhead obstructions.



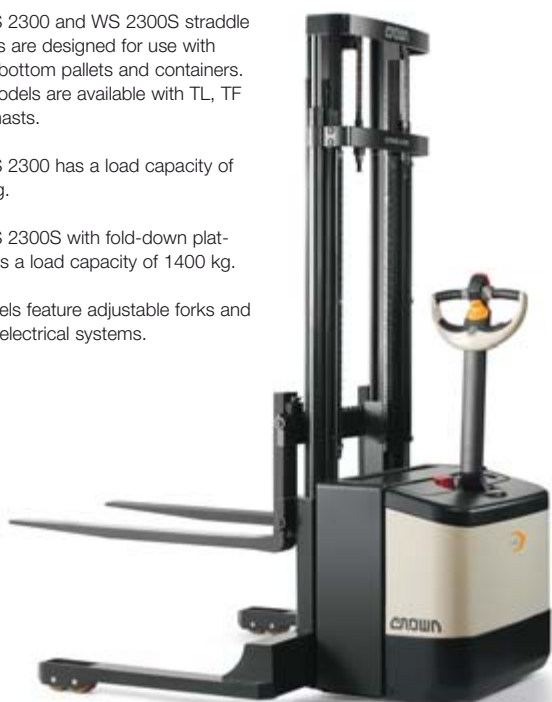
WS 2300

The WS 2300 and WS 2300S straddle stackers are designed for use with closed-bottom pallets and containers. Both models are available with TL, TF or TT masts.

The WS 2300 has a load capacity of 1800 kg.

The WS 2300S with fold-down platform has a load capacity of 1400 kg.

All models feature adjustable forks and 24-volt electrical systems.



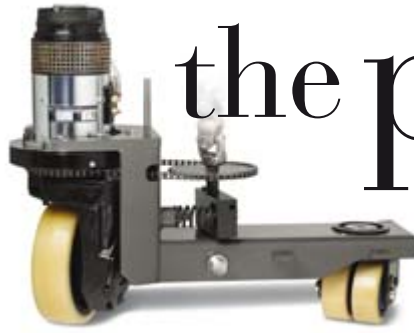
WE 2300S

The WE 2300S offers the flexibility of a pedestrian stacker with the operational benefits of a rider version for more intensive applications with longer travel distances. A convenient, spring-loaded fold-down platform, combined with foldout side restraints and heavy-duty dual casters, allows for enhanced operator stability at faster travel speeds.

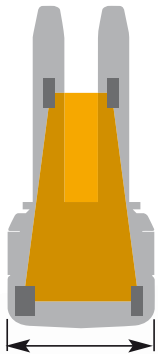
A 1250kg load capacity version is available with either a TL or TF two-stage mast. A 1400kg load capacity version also offers a TT three-stage mast.



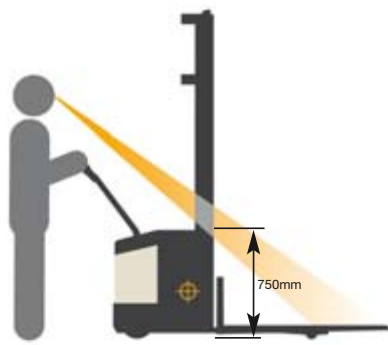
the physics of sta



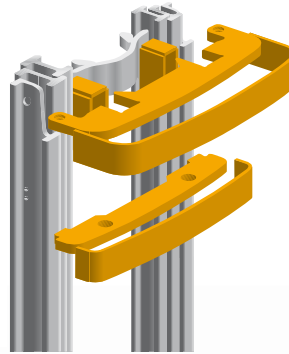
Stability, a key strength of the Crown WE 2300 Series, is critical when stacking at height. A four-point wheel configuration includes a fixed caster and adjustable undercarriage to help retain stability during transport and stacking. This wide stability quadrant is the basis of the Crown design, which also includes a sturdy mast with heavy-duty rail sections to decrease deflection in all directions. These interrelated features are complemented by a centre-mounted tiller and a low profile power unit incorporating rounded corners and reduced head length, which help provide a stable foundation for operator confidence and safety.



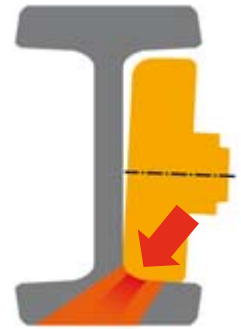
A wide stability quadrant on the WE 2300 Series provides the foundation for the significant stability advantage over stackers with a narrower width.



A low centre of gravity, provided by a low power unit height of only 750mm, is fundamental to stability and increased fork tip visibility.



Heavy-duty nested I-beam rails combined with thick steel cross bars help to eliminate twisting of the mast.



The angled position of the mast rollers project the load force into the strongest part of the rail thereby decreasing mast deflection in all directions.

Superior stability equals superior confidence.

Operator confidence is a key factor for increasing productivity, reducing product damage and, most critically, reducing safety risks. Crown's four-point configuration reduces load sway, thereby ensuring easier and accurate load positioning. Operator confidence is the final result.



Stability.



The spring-suspended fold-down platform incorporates a non-slip rubber mat and heavy-duty side restraints giving the operator a solid and stable working environment. Soft, contoured side bolsters enhance operator stability in turns and add comfort by reducing pressure points. In addition, the steering tiller has been optimally positioned for both rider and pedestrian operation.



Manoeuvrability, class leading on the WE 2300 Series, is designed to complement the superior stability attributes. The WE 1600kg stacker with high-powered battery offers the shortest turning radius and lowest profile power unit of any truck in its class.



The control advantage.

Maintaining control is a necessity in all lift truck operations.

It is even more important in a retail environment, where confined spaces, pedestrian traffic and stock placement in

congested aisles demand total operator control. Research proves that the operator interface via the control handle is the critical element for safe and productive performance. With the Crown WE 2300 Series, the centre-mounted tiller allows the operator to be positioned directly behind the clear view mast for optimal visibility in all directions. The ability to control maximum speed using the rabbit/turtle switch, or manoeuvre in tightly confined spaces using the brake override feature, adds to operator confidence and reduces potential damage. These benefits and the other features of the innovative X10 handle on the Crown WE 2300 Series provide a clear control advantage.



THE X10 HANDLE®

Ten features that make the X10 handle ten times better than the competition.

The innovative Crown X10 handle simplifies control, boosting operator safety and productivity. Operator performance improves with easy-to-use features, minimising hand and wrist movements. Tactile and visual differentiation of controls provides a natural, more efficient interface for left- and right-hand operation.



Superior visibility

is important not only for pallet entry but, also, for placing pallets at height. Many factors contribute to excellent visibility. A low profile power unit, clear view mast design with nested rails, unobtrusive positioning of hydraulic hoses and a Plexiglas™ mast guard allow the operator to easily see and position pallet loads efficiently.



1

Compact Design

The compact design of the X10 handle enables manoeuvring in the tightest of spaces. A brake override feature allows the truck to be manoeuvred while the handle remains within the profile of the power unit.



2

Robust Structural Design

The X10 handle incorporates a vacuum die-cast process using high-grade aluminum and benefits from structural webbing for maximum strength and durability.



3

Urethane Anti-Static Hand Grips

The X10's grips provide the ultimate in comfort for any environment: freezer, wet or dry. Integrated grip points simplify steering effort. Grip angle is designed for neutral wrist position.



4

Horn Buttons

The horn buttons are integrated into the X10's grips, providing easy access for either one- or two-handed operation.

5

Raise/Lower Buttons

The raise and lower controls provide tactile feedback and are ideally positioned for blending of lift/lower and traction functions regardless of travel direction.

6

Forward/Reverse Thumbwheel

The X10's unique thumbwheel design incorporates three distinct contact points to provide infinite speed control and postural relief in both forward and reverse direction.

7

Auto Reverse

The X10's auto reverse switch is designed with a contoured shape that allows for positive activation in any handle operating position.

8

Programmable Rabbit/Turtle Switch

The X10's rabbit/turtle switch incorporates two levels of programmable travel performance to match operator experience and application environment.



9

Vertical Grip

The X10 handle incorporates a sculpted control pod formed to allow for operation of the raise and lower functions while in a vertical position, ideal for positioning pallets at height.



10

Service Simplicity

The X10 Handle simplifies service with quick access to internal components. Standard corrosion-resistant internal parts and sealed switches improve service life. Individual printed circuit boards can be replaced separately for ultimate cost efficiency.

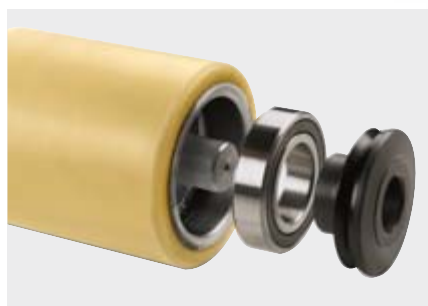
The standard for **easy** maintenance.



The robust design of the WE 2300 Series ensures long-term performance. Internal components are protected by a one-piece steel door which is easily removed for service access. The electrical panel is hinged to reveal further high quality components such as the double universal steering joint and self-adjusting steering chain.



Quick and easy access to the drive unit and other internal components assures routine maintenance remains simple.



A debris guard integrated into the load wheel assembly prevents debris such as stretch wrap, plastic strapping and packing tape from building up around the axle, which could cause component failure.



The solid structural design of the X10 handle provides superior protection of components. The use of individual circuit board technology, instead of a more expensive multi-function circuit board, simplifies repair work and reduces costs.

Options to meet any challenge.

A number of options are available for the WE 2300 Series to meet the challenges of specific applications. Each is designed to improve performance and operator productivity and further enhance the long-term value provided by every Crown product.



Battery discharge indicator with lift lock-out and integrated hour meter



High frequency on-board battery charger with 220AH battery



Battery roll-out system



Rubber drive tyre - 220mm x 90mm



Pivoting tandem load wheels



Load backrest



Freezer conditioning for operating temperatures of -30° C



Integrated side shift/auxiliary hydraulics

Crown**European Headquarters**

Moosacher Strasse 52
80809 Munich
Germany

Tel +49(0)89-93002-0

Fax +49(0)89-93002-133

German Locations:

Hamburg

Berlin

Hanover

Cologne

Dortmund

Frankfurt

Stuttgart

Nuremberg

Munich

Crown Lift Trucks Ltd.**Locations in United Kingdom:**

Sunbury, Middlesex TW16 7EF

Tel +44(0)845-8509276

Fax +44(0)845-8509277

Warrington, Cheshire WA2 8TS

Tel +44(0)845-8509280

Fax +44(0)845-8509281

Almondsbury, Bristol BS32 4RX

Tel +44(0)845-8509268

Fax +44(0)845-8509269

Swindon, Wiltshire SN3 4TS

Tel +44(0)845-8509270

Fax +44(0)845-8509271

Bellshill, Lanarkshire ML4 3LX

Tel +44(0)845-8509265

Fax +44(0)845-8509266

Crown Handling NV

Satenrozen 12

2550 Kontich

Belgium

Tel +32(0)3-4507171

Fax +32(0)3-4507181

Crown Intern Transport BV

Damsluisweg 75

1332 EB Almere

Netherlands

Tel +31(0)36-5494180

Fax +31(0)36-5494276

The logo for Crown, featuring the word "CROWN" in a stylized, bold, sans-serif font. The letters are interconnected, with the 'C' and 'R' being particularly prominent.

www.crown.com

Because Crown is continually improving its products, specifications are subject to change without notice.

Crown, the colour beige, the Momentum symbol, X10, The X10 Handle, the stylised X10 logo are trademarks of Crown Equipment Corporation.

Copyright 2006 Crown Equipment Corporation
WE/WS 2300 BROCH GB 08/06, 30 – M01395-006-02
Printed in Germany